

# LNT80 – 80,000m<sup>3</sup> LNG CARRIER

The LNT80 is a state-of-the-art LNG carrier built around the LNT A-BOX®, an IMO type A LNG containment system designed by LNG New Technologies. With a cargo capacity approximately half that of conventional sized ships and a fully-laden draught of only 9 meters, the LNT80 is designed as a workhorse for the mid-sized LNG shipping segment.

The vessel is large enough to berth at conventional terminals, and small enough to reach many draught-restrictive terminals in developing regions. LNT80's cargo capacity is also optimized for transshipment and reloading of cargoes in a hub-and-spoke infrastructure.

Saga LNG Shipping's first LNT80 is expected to be available for charter second half of 2021.



## MAIN DIMENSIONS

Length o.a.:	229.9 m
Length b.p.:	226.4 m
Beam moulded:	36.6 m
Depth moulded:	22.0 m
<b>Design draught (LNG):</b>	<b>9.0 m</b>
Scantling draught:	9.5 m

## TONNAGE

Deadweight (scantling):	42,500 ton
-------------------------	------------

## SPEED & RANGE

Service speed:	16.5 knot
Consumption (Gas Mode):	36 mt/day LNG

## MACHINERY & PROPULSION

The propulsion system shall feature one low speed, 2-stroke, dual fuel main engine mechanically connected to a single shaft and fixed pitch propeller. The auxiliary generator sets shall be able to burn natural gas.

<b>Dual fuel</b> main engine:	approx. 14,300 kW
Auxiliary engines:	approx. 3,000 kW

## LNT A-BOX® CARGO SYSTEM

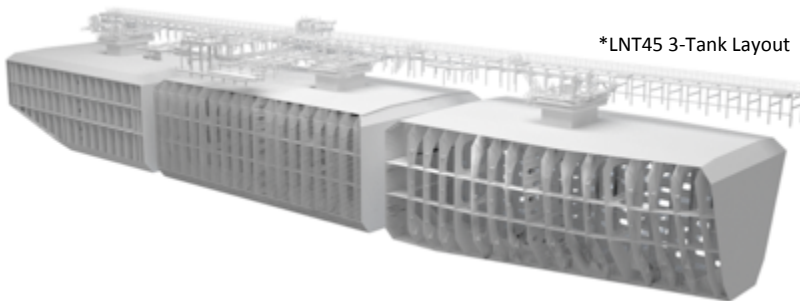
No. of cargo tanks:	4 (IMO type A)
<b>Total capacity:</b>	<b>80,000 m<sup>3</sup></b>
MARVS:	0.4 barg
Design density:	0.6 ton/m <sup>3</sup>
Boil-off rate:	approx. 0.09% per day
Min.temp.:	- 165 °C



## SAGA LNG SHIPPING PTE LTD

Focused on optimization and project needs, we build, finance and own tailor-made marine LNG assets and offer these on charter to our partners and clients.

Saga LNG's current scope comprises **FSUs**, **LNG Barges** & **LNGCs**, **FSRUs**, **FLNGs**, and **LNG Bunker Vessels**. Our focus is firmly on the small to mid-sized segment, which we generally define as being units with a storage capacity of 1,000 to 100,000 cubic meters.



The LNT A-BOX® IMO type A containment system has been proven especially suitable for the small to mid-scale segment and is the core of our fleet development strategy.

Saga LNG Shipping consists of a multinational team with decades of experience in shipping operations and marine LNG. Our expertise and rich experience from doing business in China gives Saga LNG a competitive edge.

## MORE INFORMATION & INQUIRIES

### SAGA LNG SHIPPING:

Jonathan Verswijver  
JV@SAGALNG.COM  
+86 186 2171 8847

WWW.SAGALNG.COM

### LNT MARINE:

POST@LNTMARINE.COM  
+47 41 45 95 43

WWW.LNTMARINE.COM

## THE LNT A-BOX®

### Key Advantages

#### Building Capacity & Cost

- Enables more yards to build LNG carriers
- Independent tank construction
- Simple and cost-effective design

#### Safety

- Inspection and maintenance friendly
- No restrictions on partial loading
- Robust tank design
- Truly independent primary and secondary barriers

#### Efficiency

- Excellent volume utilization
- Excellent thermal insulation
- Hull form flexibility

